

Dredging Inspection Field Report

Site Observations

Date: 9/28/2021 Field Engineer: Mike Triano
 Weather Conditions: Breezy, Overcast Temperature: 80s
 Wood Project Number: 2402210005.01.01 Client: Isle of Palms
 Contractor: Branch Diversified (BDI) Foreman Onsite: Brett Tucker

Item	Observations	Photo
Crew Size & Location	<p>**All Barges are located in the Southern Canals**</p> <p>30' x 80' barge, moored off to the large ~ 50' X 100'+ Hopper barge in the intracoastal. The 30' X 80' Barge is used to unload the smaller barges. The ~ 50' X 100'+ Hopper barge is used to transport material to DMMA. Both Barges are located east of Baseline 1 in the Intracoastal: Southern IOP.</p> <p>One 20' Wide push barge actively dredging Baseline 4 One 20' Wide push barge actively dredging Baseline 2 26' Thruster Barge actively dredging baseline 1 Two Tugs pushing 20' Wide barges back and forth from Baseline 1 and 2. One large tug moving large Hopper barges to the DMMA One additional 30' X 80' "MD-80" Barge utilized to off-load smaller barges staged near the mouth of Baseline 1 in the intracoastal. 20' aluminum boat used to travel to and from the site.</p>	See Map
Equipment on Site	Same as Crew size, 3 mechanical dredges (excavators)	Photos: 1, 2, 3, 5, & 6
Work Completed	<p>Majority of Northern IOP Canals. *</p> <p>Portions of Baseline 1, 2, 4 and 5 Southern IOP Canals</p> <p><u>BDI advised dredging occurs in two phases: on the way in for access & removal of top layer of sediment and on the way out for getting canal to specified grade. This is true for all canals that barges cannot initially access.</u></p>	See Map
Work Underway	Actively Dredging Baseline 1, 2 & 4 South IOP.	See Map
Materials on Site	Stored in ~100'+ X 50' Hopper barge and One 30' x 80' barge "MD-80". Both barges are moored in the intracoastal. East of Baseline 1: South IOP.	Photo: 5 & 6
Manatee Observer	All crew on barges were advised to keep eye out for Manatees - signs posted on northern and southern canals.	Photos: 4
Turbidity Monitoring	Background Reading: Monitoring Reading:	Photos: N/A
Dewatering	Lance advised dewatering does not occur - drain holes are located in bottom of containers. Lance advised inner canals are mixing zones and therefore sediment/water returning to canals are not of concern.	



Dredging	Mechanical	
Offloading Location	Large ~50' -100'+ Hopper barge and 30' X 80' "MD-80" Barge – east of Baseline 1: Southern IOP. Was advised that trips to Reed Island DMMA are taken once these large barges are full, that usually occurs once a day.	Photo: 5 & 6
Posted Permit	Permits are not posted. BDI was provided with additional copies.	
Other...	See Additional Comments Below	

*BDI will return to Canals to clean up survey identified high spots

Additional Notes

Projected Schedule:

- Brett Tucker indicated that Baselines 1, 2, 3, 4, and 5 in the southern IOP canals will be focus for the next month.
- Brett Tucker indicated that all barges are encouraged to produce 5 to 6 loads per day, putting the tentative completion date around Mid-November.

Anticipated Obstacles to Meeting Schedule:

- Equipment malfunctioning / no operator to dig / Barges at Idle.
- Narrow spots in the canals between boat docks.
- Displaced material causing contractor to re-work areas to correct high spots.

Engineer's Notes:

- MD-80 Barge is utilized as an off-loading point during the day and is emptied into the larger Hopper barges in the evenings to cut off-loading time and reach the 5 to 6 load goal.
- Material in the southern canals contains organic matter (tree limbs/trunks) as well as sand and clay.
- Barges are being successful in reaching 5 to 6 load goals.

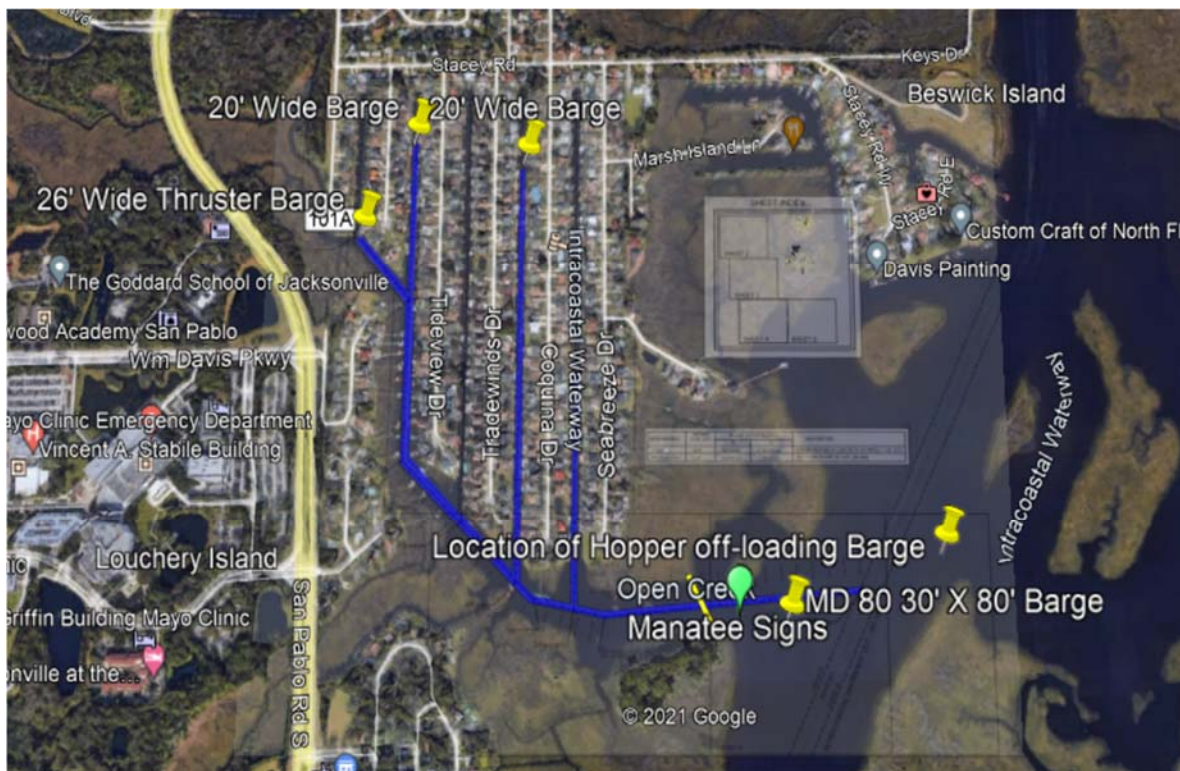
Field Engineer Signature:



Date: 9/28/2021

Maps: **Red** is completed Work **Blue** is Work to be completed

*BDI will return to Canals to clean up survey identified high spots



Photograph Log:



Photo 1: View of 20' Wide Push Barge located in Baseline 4: Southern IOP



Photo 2: View of 26' Thruster Barge heading to off-load. Barge currently dredging in Baseline 1: South IOP



Photo 3: View of 20' Wide Push Barge heading to off-load. Barge currently dredging in Baseline 2: South IOP



Photo 4: Typical view towards mouth of Baseline 1: Southern IOP. Manatee Signs and Turbidity Curtains visible in the distance.



Photo 5: "MD - 80" 30' X 80' Barge utilized to off-load smaller barges staged near the mouth of Baseline 1 in the intracoastal. Barge was awaiting off-load at time of the inspection.



Photo 6: View towards large Hopper Barge staged east of the South IOP canals.